



CONNECTIVITY UNDER EXTREME CONDITIONS



ROBOFLEX® ECOSYSTEM

CONNECTIVITY UNDER EXTREME CONDITIONS



The Roboflex® Ecosystem promotes the **integration of market devices and systems** through hardware. We deliver **constant connectivity using technologies** that take into account the nature of each operation.

We know that operations in harsh environments hinder the usability of electronic devices, which is why Roboflex® ecosystem solutions offer **total integration for your device, regardless of the activity carried out, with solutions that guarantee communication, charging, protection and fixation of devices.**

Connectivity

Roboflex® Cases have connectors that can be used for charging and/or data transfer. Customizing the connectors makes it possible to connect the tablet to the most varied equipment.

Protection

Extended device lifespan with drop, impact and vibration protection.

Usability

Complete ecosystem of fixings, accessories and dedicated equipment that guarantees efficient operations.

Mount the ideal Roboflex® solution for your operation

Customize a suitable solution for your operation.

1 Choose a case for your mobile device

Choose the Roboflex® case that meets your business needs

2 Choose the base to attach to the case

Choose the base that will secure the case to the arm

3 Choose the arm

Choose the arm of the appropriate size for the installation location's needs

5 Choose how the device will be charged and data transferred

Choose the best way to charge the device and transfer data

4 Choose a base to mount on the surface

Choose the base that will keep your device securely in place at the desired installation location



Build the ideal Roboflex® solution for your operation

Customize a suitable solution for your operation

1 Cases



Sealed case without attachment

Case without base for rear attachment, ideal for greater mobility in field operations.



Screw-mounted case

Ideal for operations where the equipment will be fixed and will not need to be removed from site.



Magnetic case

Ideal for operations where equipment needs to be removed from site, during or at the end of the operation.

2 Base to attach to case



Screwed



Magnetic Base

3 Arms



Short arm



Long arm

4 Bases for fixing to the surface



Screwed



Tubular



Adhesive



Suction cup base

5 Device charging and/or data transfer



Cable



Magnetic



IP54 car charger



IP65 car charger



Roboflex® Standard

Roboflex® Cases were developed for **operations in extreme environments**. We use full coupling, **fully protecting all sides of the tablet**.

All lines comply with degrees of **protection and resistance to falls, impact, water and vibration**.



High resistance material



Weather protection



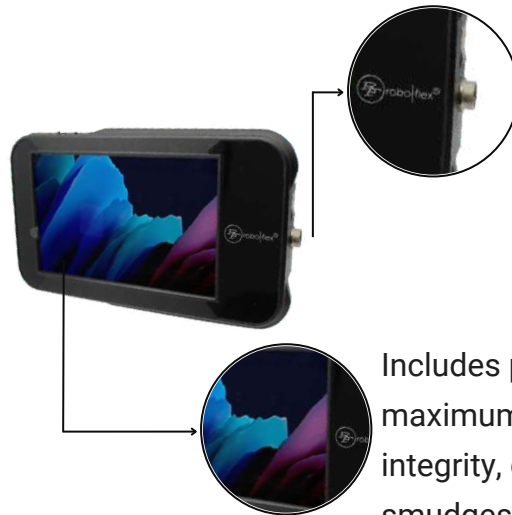
Product with responsive design



Long life product



Robust ecosystem with a foundation of secure both mechanical and electrical connections



Offers charging capability to all cases even in extreme environments.

Includes protective film ensuring maximum preservation of screen integrity, guarding against scratches, smudges and other possible damage



Availability of all* device features, such as buttons and cameras

*Except to memory card and SIM card



Connector customization


Enables the connection of the tablet with the most varied equipment.





The connectors can be used for charging and/or data transfer.

Roboflex® Resources

The technologies used in Roboflex® solutions offer compatibility for the use of sensors, reading of industrial signals, amplifier boxes and device cooling, all integrated into an ecosystem of hubs, adapters and other peripherals.

 Anti-theft system

 Charging + Data


 Industrial Connectivity
Greater durability and safety compared to standard connectors

 Ventilation system

For equipment under constant sun exposure or exposed to high temperatures. They guarantee better functioning and increase the useful life of the device.


*With this feature, the case will not have a specific degree of protection.



 Audio output

Connection to audio devices such as headphones and speakers via P2 input

*With this feature, the case will not have a specific degree of protection.

 Signal converters
USB-C technology

Roboflex® signal converters are compatible with various devices such as I/O, ethernet, CAN, RS232, USB, P2 and others, helping to maintain the connectivity of the operation.

 HUB

Roboflex® HUBs offer port expansion and a variety of connections for other devices, being able to add USB ports, industrial and vehicular communication protocols.

Mobility

Roboflex® Cases allow the addition of handles for use in the field.

Compatible with all cases.



Handstrap



Wrist strap



Shoulder strap



Usability

Roboflex® Cases offer the possibility of adding support for the tablet's pen.

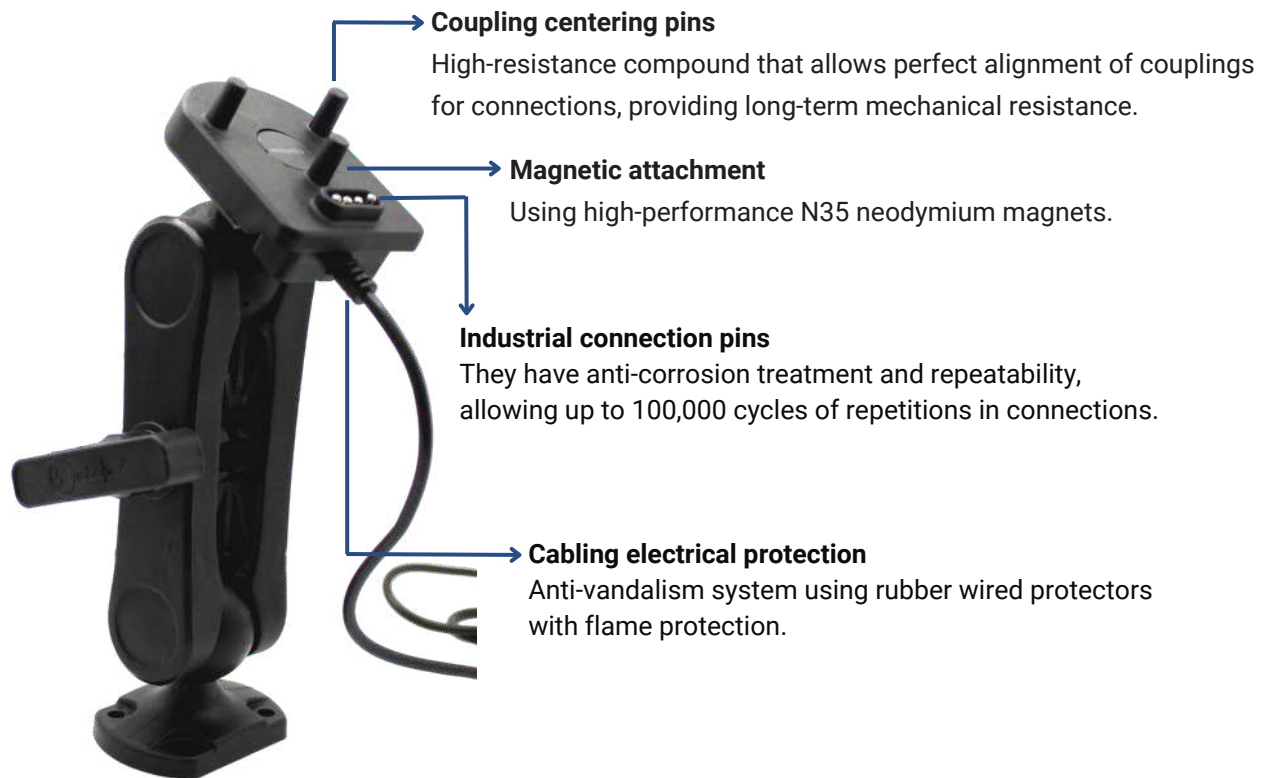
Check compatibility with our products



Pen support

Roboflex® Magnetic System

Exclusive technology that allows devices to be fixed and charged in Roboflex® ecosystem cases and was developed to **support the constant removal of equipment** during operation, keeping the device charged when the plug is connected to the case.



Roboflex® Magnetic System

It offers robustness in field activities, **withstanding extreme situations**, such as **vibrations, impacts, bad weather and repetitions**, such as constant removal of the product during the operation.

Ideal for operations such as:



Operational checklist;



Need for decentralized notes of the fixation location;



Possibility of moving the device to another operating location.



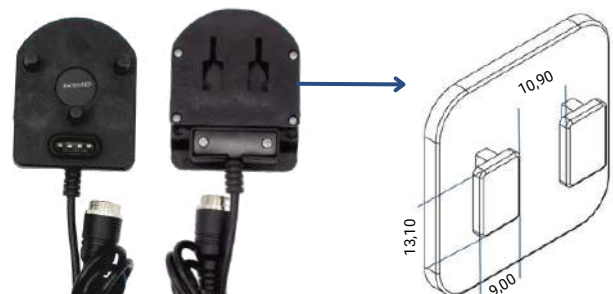
Magnetic plug technology



Magnetic plug Size C (1.5")

Code: PLG040005

Weight: 180g



Magnetic plug with coupling

Code: PLG040007

Weight: 100g

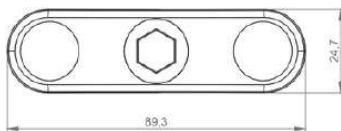
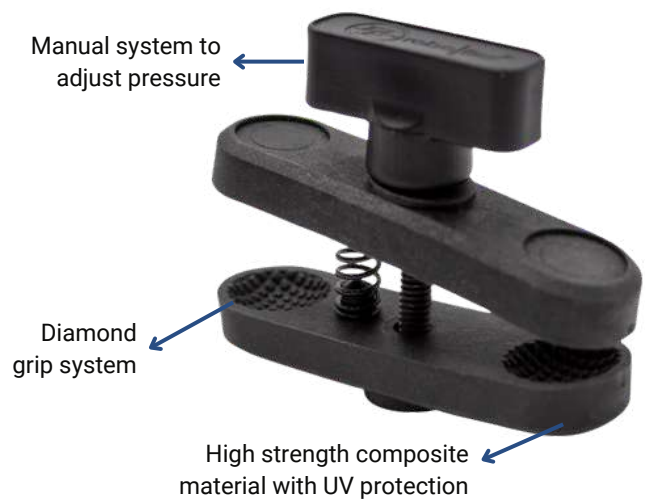


Arms

Roboflex® arms feature the diamond grip system, responsible for providing **maximum adherence to the base**.

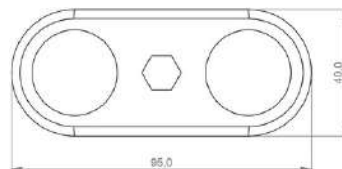
In addition to this technology, the arms also incorporate the **knob adjustment system**, suitable for **calibrating the pressure between the product's components**.

The arms are constructed from a material that offers **high strength and UV protection**, which **extends the product's lifespan and reduces its weight**.



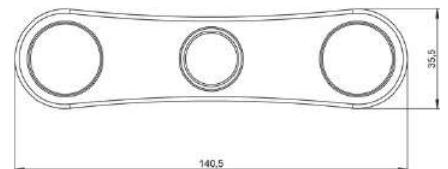
Short arm
Size B (1")

Code: BRC040003
Weight: 80g



Short arm
Size C (1.5")

Code: BRC040004
Weight: 140g



Long arm
Size C (1.5")

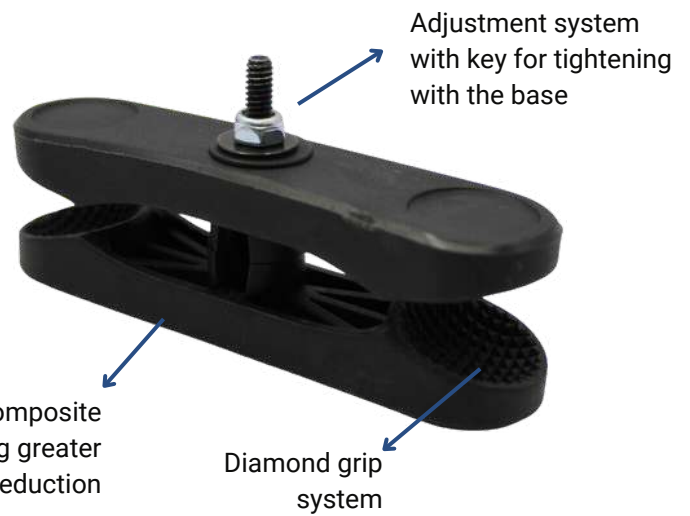
Code: BRC040002
Weight: 160g



Self-locking arm

Unlike the traditional model, the self-locking model has an **arm adjustment system using a key**.

Ideal for **restricting the number of people who can perform adjustments on the piece** and preventing theft, theft, vandalism and sabotage.



Highly engineered composite material allowing greater strength and weight reduction



Short self-locking arm
Size B (1")
Code: BRC040006
Weight: 60g



Short self-locking arm
Size C (1.5")
Code: BRC040007
Weight: 140gr



Long self-locking arm
Size C (1.5")
Code: BRC040005
Weight: 140g

Tubular base

Tubular bases offer a practical and safe solution for fixing tubular objects and can be installed on **tubes up to 28mm**.

Ideal for installation on forklifts, tractors and other spaces with round tubes.



Tubular base
Size B (1")
Code: BSE040022



Tubular base
Size C (1,5")
Code: BSE040023



Double tubular base
Size B (1")
Code: BSE040025

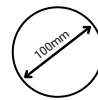


Double tubular base
Size C (1,5")
Code: BSE040024

Adhesive base

The adhesive base allows application to the equipment **without the need to drill or alter the fixing surface**. It is the ideal option for cases where it will be necessary to remove the device after a period of time or cases where **the available surface does not allow drilling for fixation**.

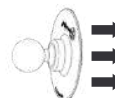
Developed with technology that **allows adaptation to irregular surfaces** where the base molds itself according to the application geometry, and **can be applied to plastics, glass and metals**.



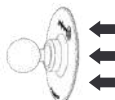
Malleable flat base with a diameter of 100mm. Allows attachment on flat and organic surfaces.



High-performance adhesive with durability up to 150 degrees after application.



High-tech adhesive for fixing. Can be reused with refill kit



Easy process of removing the product after its period of use



Adhesive base
Size B (1")
Code: BSE040020



Adhesive base
Size C (1.5")
Code: BSE040021



Screwed base

The screwed base is intended for operations where **the surface can be drilled** and easily accessed by all users.

Made of high-strength and lightweight material, it's a great solution **for keeping your gear safe without compromising adjustability.**



High-strength material



Protection against bad weather



Lightweight product and modern design



Long life product



2-hole base
Size B (1")
Code: BSE040010



2-hole base
Size C (1,5")
Code: BSE040011



4-hole base
Size B (1")
Code: BSE040007



4-hole base
Size C (1,5")
Code: BSE040008



7-hole base
Size B (1")
Code: BSE040003



7-hole base
Size C (1,5")
Code: BSE040004



Suction Cup base

The suction cup line is ideal for users who require **constant removal of equipment** during or at the end of operation, offering dynamism and capacity to resist impacts and the temperature where it will be fixed.

Roboflex® suction cups use instantaneous vacuum technology with a high level of absorption. **The fixing is long-term resistant**, even in operations that present high temperatures, providing **extra security for fixing to glass, metal, non-porous and groove-free surfaces**.



Suction cup base
Size B (1")
Code: BSE040016



Suction cup base
Size C (1.5")
Code: BSE040015



Double Suction Cup Base
Size B (1")
Code: BSE040017



Double Suction Cup Base
Size C (1,5")
Code: BSE040018



Triple Suction Cup Base
Size B (1")
Code: BSE040014



Triple Suction Cup Base
Size C (1,5")
Code: BSE040012

Adapters



Used to **extend the support length**, requiring the **use of two arms**.

Extender

Size C (1,5")

Code: BSE040026



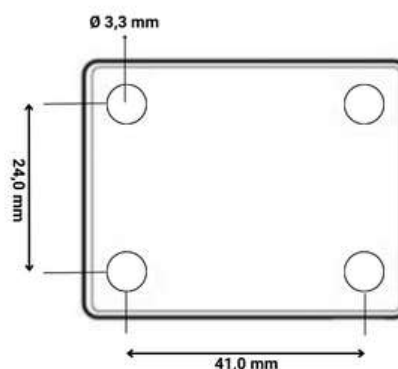
Base with a **1/4" screw size**, compatible with **international replacement bases**.

Base ball

Size B (1")

Screw 1/4"

Code: BSE040028



Adapter base

Size C (1,5")

Code: BSE040029

*Product outside the AMPS hole standard.

Cables and chargers

The cables and chargers **offer charging and data synchronization capabilities.**



Code: CB0040008

IP65 charging cable

O cabo de carregamento IP65 apresenta as seguintes especificações:

- Dust protection
- Protection against temporary immersion
- Resistance against corrosion due to sea spray
- Protection against water jets



Code: CB0040007

IP54 charging cable

The IP54 charging cable has the following specifications:

- Dust protection
- Protection against water jets
- Industrial connector



IP65 Charger

Code: CAR040004



IP54 Charger

Code: CAR040005

TECHNICAL CHARACTERISTICS

- Voltage range: 11 to 31V
- Voltage output : 5.5V
- Maximum current: 10A
- Regulatory:
 - EN 55032: 2015+AC:2016+A11:2020
 - EN 55035: 2017+A11:2020
 - EN IEC 61000-3-2:2019
 - EN 61000-3-3:2013+A1:2019
- Overcurrent and overvoltage protection
- High efficiency up to 95%
- Over-temperature shutdown, output short-circuit protection
- It has holes that allow the equipment to be fixed with screws.
- Cable length: 1m




**For more information
visit our website!**

We have redesigned our website to give our existing and potential customers an insight into our solutions and services offered. Stay tuned to our blog for information on technologies, industry news and our solutions.


For questions and information please contact our sales team.



Click [here](#) and go to our website or point your phone's camera at the QR Code.

 55 31 983520942

 comercial@roboflex.com.br

 55 31 3054-4970

 www.roboflex.com.br



www.roboflex.com.br/en

55 31 3054-4970

55 31 983520942

comercial@roboflex.com.br