



SOLUTIONS FOR THE PORT SECTOR





ROBOFLEX® SOLUTIONS IN THE PORT SECTOR

Roboflex® develops hardware solutions that integrate port activities, offering connectivity and adapting devices to the nuances within terminal operations.

With the peculiarities of this sector in mind, Roboflex® solutions have been developed to protect mobile devices in any environment, including operation-specific weather such as corrosion, liquid and solid objects. With a simplified plug and play integration, Roboflex® solutions ensure connectivity in extreme environments.



Transform tablets into on-board computers (VMT's) for notes and dispatching on equipment such as terminal tractors and RTG's.'



Docked operations utilizing our responsive ecosystem: the entire product range is designed to meet usability requirements in field conditions, even under extreme circumstances.



We enhance usability within our ecosystem by employing technologies that enable mobility, facilitating the smooth flow of operations in terminals. Additionally, we promote seamless connectivity between our products and equipment through signal conversion methods such as RS232, RJ45, RS485, and CAN.



More than 50 million costs saved estimated by our customers



More than 500 clients served



Over 500,000 solutions deployed



National product



Boosting operational life

Manufactured with high quality materials and advanced technology, Roboflex® products increase the operational life of the equipment.

BUILD YOUR SOLUTION

Customize a solution for your operation.

1 Choose a case for your mobile device

Choose the Roboflex® case that meets your business needs

2 Choose a base to attach to the case

Choose the base that will attach the case to the arm

3 Choose an arm

Choose the right-sized arm for the installation site's needs.

Choose a base to attach to the surface 4

Choose the base that will keep your device secure in the desired installation location.

5 Choose how device charging and data transfer will be done

Choose the best way to charge your device and to transfer data.



1 Cases



No fixing
Case without base for rear attachment, ideal for greater mobility in field operations.



Screwed
Ideal for operations where the equipment will be fixed and will not need to be removed from site.



Magnetic
Ideal for operations where equipment needs to be removed from site, during or at the end of the operation.

2 Base to attach to case



Screwed



Magnetic Base

3 Arms



Short arm



Long arm

4 Bases for fixing to the surface



Screwed



Tubular



Adhesive



Suction cup base

5 Device charging and/or data transfer



Cable



Magnetic

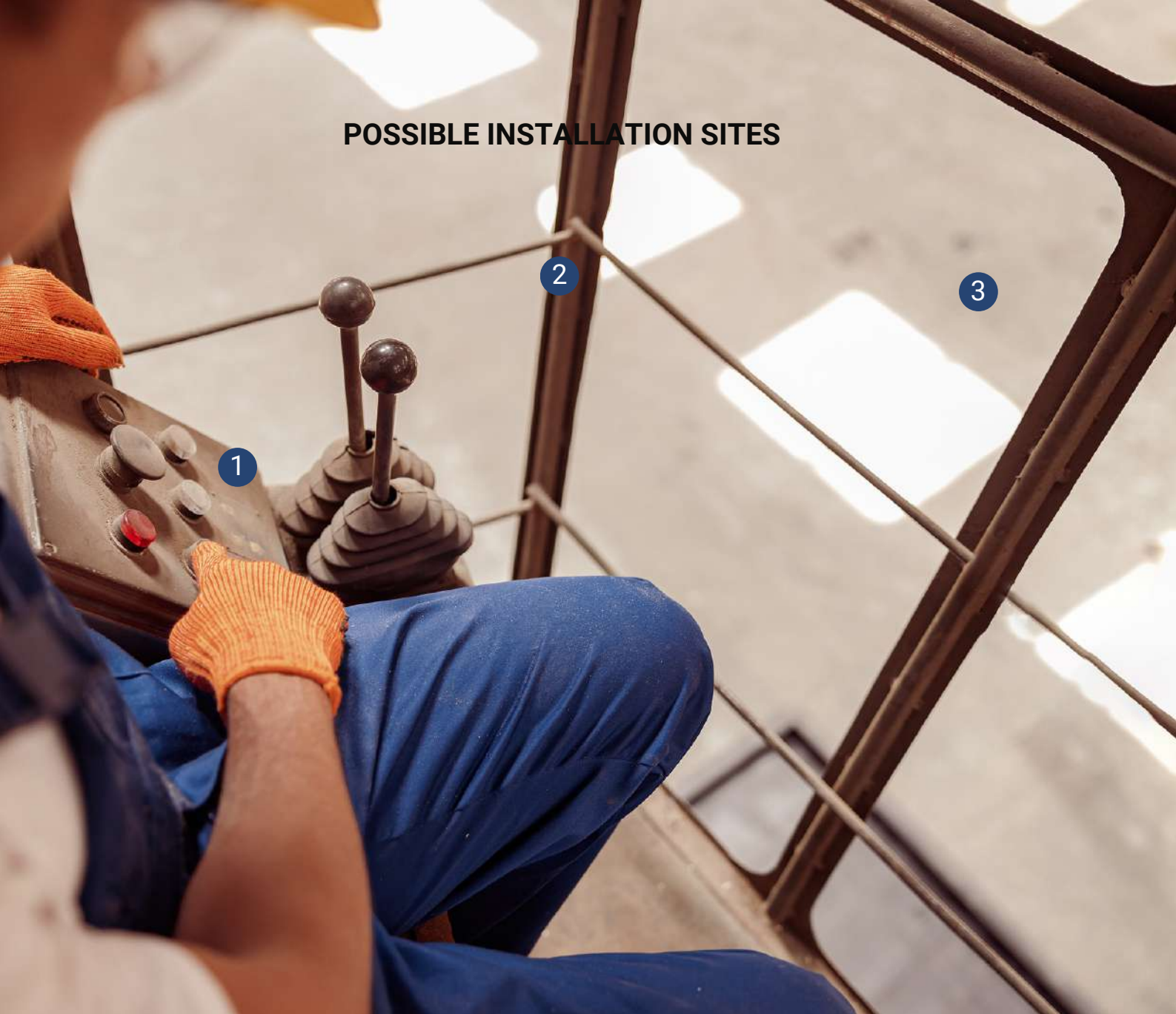


IP54 car charger



IP65 car charger

POSSIBLE INSTALLATION SITES



- 1 Use Roboflex® adhesive or screw base to install your device on surfaces that allow drilling
- 2 Using Roboflex® tubular bases you can install your device on tubular objects up to 28mm. Ideal for forklifts, tractors, and other round tube locations.
- 3 Install your device on windshields with Roboflex® adhesive bases or suction cups.

POSSIBLE INSTALLATION SITES

1



Case
Adhesive base size C
Code: BSE040021
Long arm size C
Code: BRC040002
Magnetic plug size C
Code: PLG040005

2



Case
Tubular base size C
Code: BSE040023
Short arm size C
Code: BRC040004

3



Case
Adhesive base size C
Code: BSE040021
Long arm size C
Code: BRC040002
Magnetic plug size C
Code: PLG040005

ROBOFLEX® DESIGN

Roboflex® cases are designed for operations in extreme environments. We use full coupling, fully protecting all tablet faces. All our lines meet standards for protection and resistance to drops, impact, and vibration.



High resistance material



Product with responsive design



Protection against bad weather



Long life product



ROBOFLEX® STANDARD



Robust ecosystem with a foundation of secure both mechanical and electrical connections

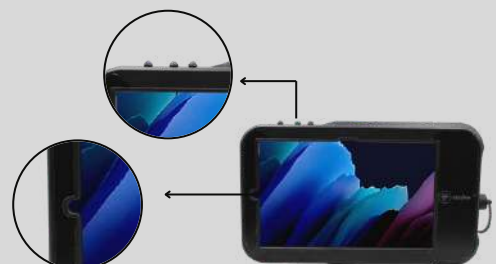


Offers charging capability to all cases even in extreme environments.

Includes protective film ensuring maximum preservation of screen integrity, guarding against scratches, smudges and other possible damage

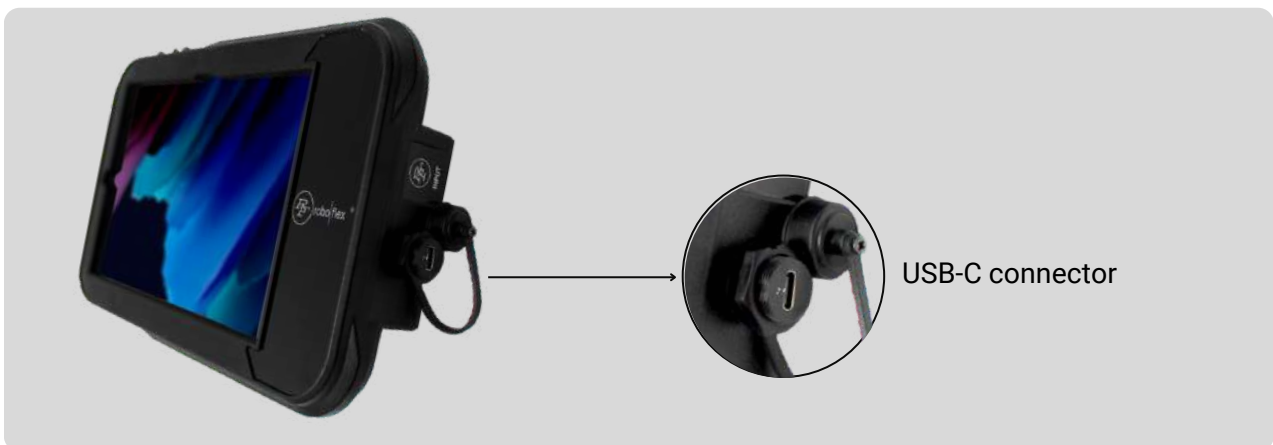
Availability of all* device features, such as buttons and cameras

*Except to memory card and SIM card





ROBOFLEX® RESOURCES


One of the features offered by Roboflex® is the customization of the connectors, thus enabling the tablet to connect to the most varied equipment. These connectors can be used for charging and/or data transfer.



ROBOFLEX® RESOURCES

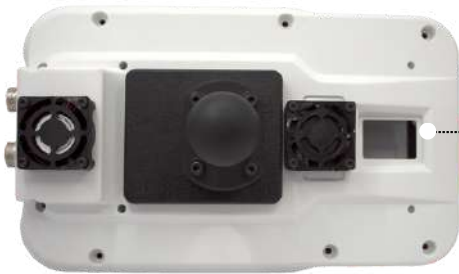
 Anti-theft system

 Charging + Data

 Industrial Connectivity
Greater durability and safety
compared to standard connectors

Roboflex® solutions utilize technologies that enable the use of sensors, industrial signal readers, amplifier enclosures, and device cooling, all integrated within an ecosystem of hubs, adapters, and other peripherals.

DIFFERENTIALS



Ventilation

Option to incorporate a ventilation system for equipment constantly exposed to sunlight or high temperatures, ensuring improved functionality and an extended device lifespan.



Audio output

Connection to audio devices such as headphones and speakers via P2 input



Signal converters USB-C technology

Roboflex® signal converters are compatible with various devices such as I/O, ethernet, CAN, RS232, USB, P2 and others, helping to maintain the connectivity of the operation.



HUB

Roboflex® HUBs offer port expansion and a variety of connections for other devices, being able to add USB ports, industrial and vehicular communication protocols.



MOBILITY

Allows the addition of handles for field use of the case. **Compatible with all cases.**



Hand strap



Wrist strap



Shoulder strap

USABILITY

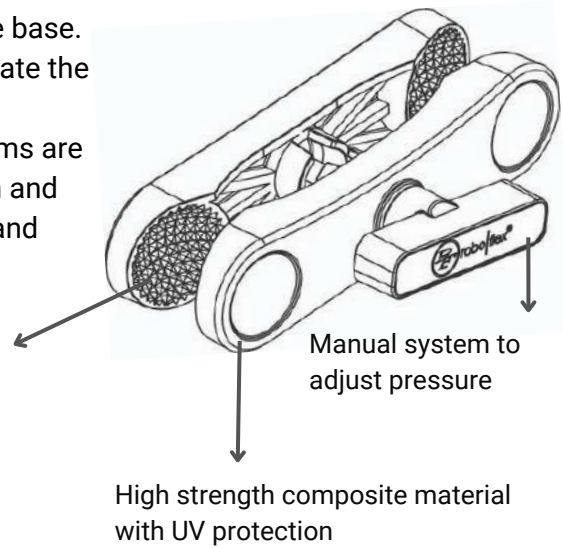
Option to add tablet pen holder.
Must check compatibility of our products.



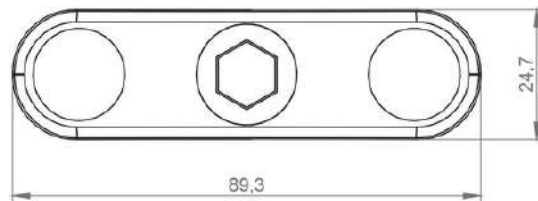
Pen holder

ARM

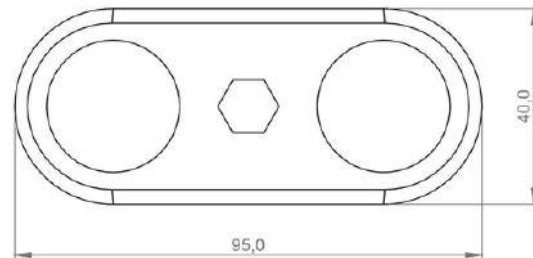
Roboflex® arms feature the diamond grip system, responsible for providing maximum adherence to the base. In addition to this technology, the arms also incorporate the knob adjustment system, suitable for calibrating the pressure between the product's components. The arms are constructed from a material that offers high strength and UV protection, which extends the product's lifespan and reduces its weight.



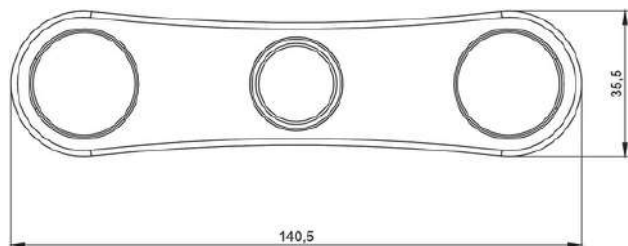
Short arm
Size B (1")
Code: BRC040003
Weight: 80g



Short arm
Size C (1.5")
Code: BRC040004
Weight: 140g

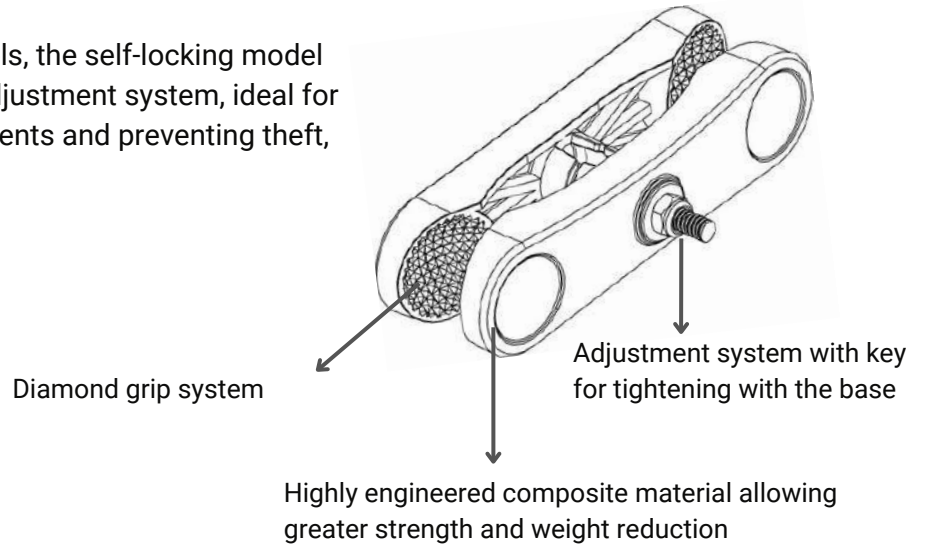


Long arm
Size C (1.5")
Code: BRC040002
Weight: 160g

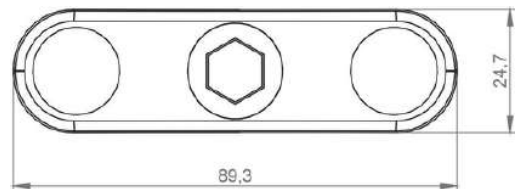


SELF-LOCKING ARM

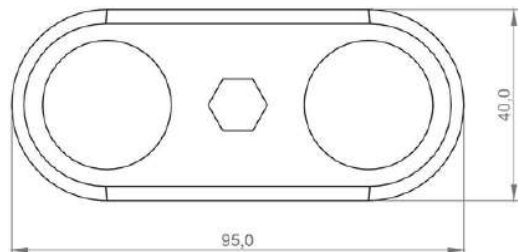
Different from traditional models, the self-locking model features a key-operated arm adjustment system, ideal for limiting access to arm adjustments and preventing theft, vandalism, and sabotage.



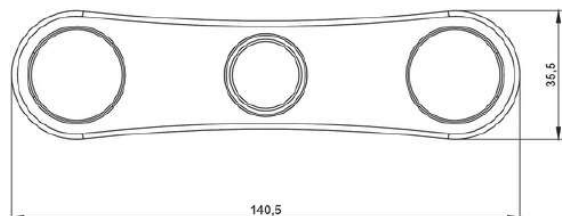
Short self-locking arm
Size B (1")
Code: BRC040006
Weight: 60g



Short self-locking arm
Size C (1.5")
Code: BRC040007
Weight: 140gr

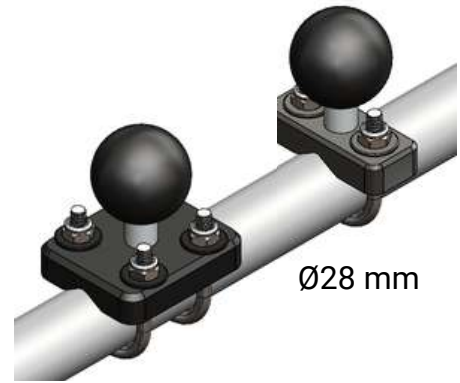


Long self-locking arm
Size C (1.5")
Code: BRC040005
Weight: 140g



TUBULAR BASE

Tubular bases offer a practical and secure solution for attaching to objects with a tubular shape and can be installed on tubes up to 28mm in diameter. They are ideal for installation on forklifts, tractors, and other spaces with round tubes.



Tubular base
Size B (1")
Code: BSE040022



Tubular base
Size C (1,5")
Code: BSE040023



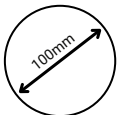
Double tubular base
Size B (1")
Code: BSE040025



Double tubular base
Size C (1,5")
Code: BSE040024

ADHESIVE BASE

The adhesive base allows easy application to the equipment without the need of drilling or altering the mounting surface. It's the ideal option for situations where device removal is necessary after a period of time or when the available surface doesn't permit drilling. Developed with technology that enables adaptation to irregular surfaces, the base conforms to the application's geometry and can be applied to plastic, glass, and metal.

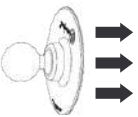


Malleable flat base with a diameter of 100mm. Allows attachment on flat and organic surfaces.

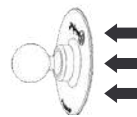


150°

High-performance adhesive with durability up to 150 degrees after application.



High-tech adhesive for fixing. Can be reused with refill kit



Easy process of removing the product after its period of use



Adhesive base
Size B (1")
Code: BSE040020



Adhesive base
Size C (1,5")
Code: BSE040021

SCREWED BASE

The screwed base is intended for operations where the surface can be drilled and easily accessed by all users.

Made of high-strength and lightweight material, it's a great solution for keeping your gear safe without compromising adjustability.



High-strength material



Protection against bad weather



Lightweight product and modern design



Long life product



2 hole base
Size B (1")
Code: BSE040010



2 hole base
Size C (1,5")
Code: BSE040011



4-hole base
Size B (1")
Code: BSE040007



4-hole base
Size C (1,5")
Code: BSE040008



Base 7 holes
Size B (1")
Code: BSE040003

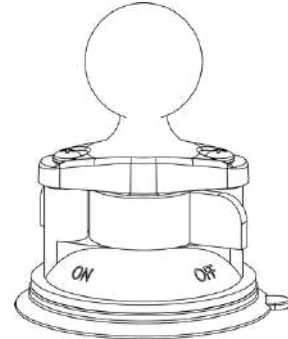


7-hole base
Size C (1,5")
Code: BSE040004

SUCTION CUP BASE

The suction cup line is ideal for users who need to constantly remove the equipment during or at the end of the operation, offering dynamism and ability to resist impacts and temperature where it will be fixed.

Roboflex® suction cups use instant vacuum technology with a high level of absorption. The fixation is long-term resistant, even in operations with high temperatures, providing extra security for fixation on glass, metal, non-porous and non-slotted surfaces.



Suction cup base
Size B (1")
Code: BSE040016



Suction cup base
Size C (1.5")
Code: BSE040015



Double Suction Cup Base
Size B (1")
Code: BSE040017



Double Suction Cup Base
Size C (1,5")
Code: BSE040018



Triple Suction Cup Base
Size B (1")
Code: BSE040014



Triple Suction Cup Base
Size C (1,5")
Code: BSE040012

ROBOFLEX® MAGNETIC SYSTEM

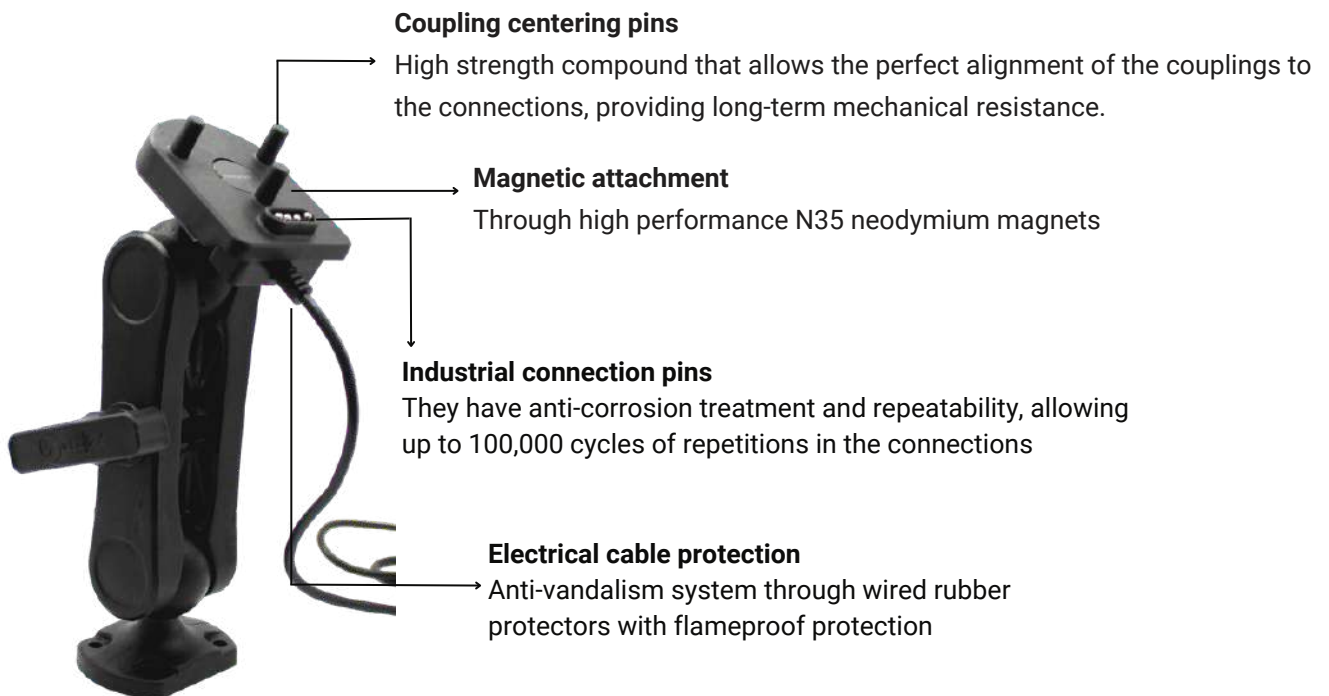
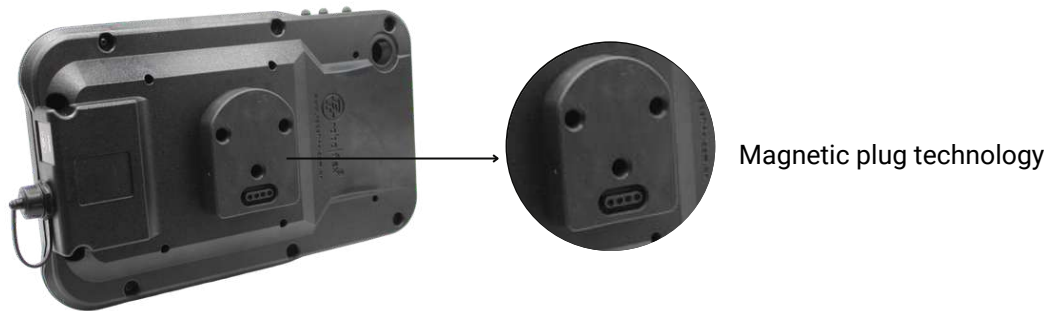
The Roboflex® magnetic system is a unique technology that enables the attachment and charging of devices within the Roboflex ecosystem cases.

Roboflex® magnetic systems are designed to endure constant equipment removal during operation, ensuring the device remains charged when the plug is connected to the case.

It provides robustness in field activities, enduring extreme conditions such as vibrations, impacts, weather, and repeated removal of the product during operation.

Ideal for operations like:

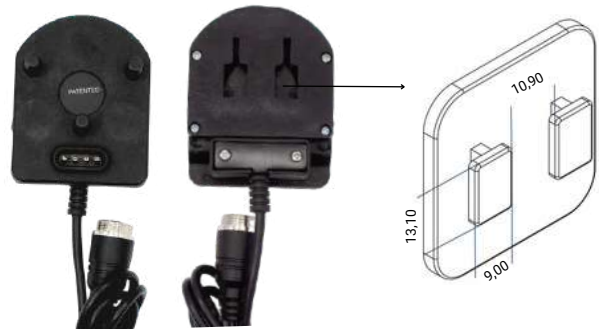
- Operational checklist
- Necessity of decentralized aiming from the attachment location
- Possibility of moving the device to another operating site



ROBOFLEX® MAGNETIC SYSTEM



Magnetic plug Size C (1.5")
Code: PLG040005
Weight: 180g



Magnetic plug with coupling
Code: PLG040007
Weight: 100g



In this photo:

T220 Magnetic Case

Code: CST040127

Magnetic Plug size C

Code: PLG040005

Long Arm size C

Code: BRC040002

Suction cup base size C

Code: BSE040015

Point your phone's camera at the QR Code and see our magnetic solution in operation.



ADAPTERS



Extender size C
Code: BSE040026

Used to extend the support length, requiring the use of two arms.

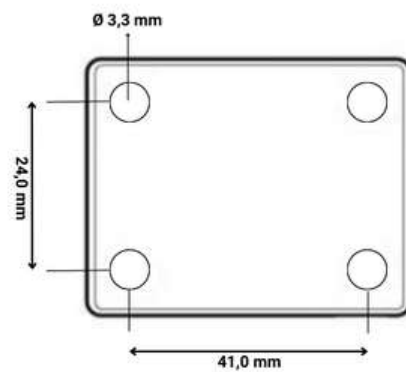


Base ball size B screw 1/4"
Code: BSE040028

Base with a 1/4" screw size, compatible with international replacement bases.



Adapter base size C
Code: BSE040029



*Product outside the AMPS hole standard.

CABLES

The cables and chargers offer charging and data synchronization capabilities.



IP65 charging cable
Code: CBO040008

The IP65 charging cable has the following specifications:

- Dust protection
- Protection against temporary immersion
- Resistance against corrosion due to sea spray
- Protection against water jets



IP54 charging cable
Code: CBO040007

The IP54 charging cable has the following specifications:

- Dust protection
- Protection against water jets
- Industrial connector

CHARGERS



IP65 charger
Code: CAR040004



IP54 charger
Code: CAR040005

TECHNICAL CHARACTERISTICS

- Voltage range: 11 to 31V
- Voltage output : 5.5V
- Maximum current: 10A
- Regulatory:
 - EN 55032: 2015+AC:2016+A11:2020
 - EN 55035: 2017+A11:2020
 - EN IEC 61000-3-2:2019
 - EN 61000-3-3:2013+A1:2019
- Overcurrent and overvoltage protection
- High efficiency up to 95%
- Over-temperature shutdown, output short-circuit protection
- It has holes that allow the equipment to be fixed with screws.
- Cable length: 1m




**For more information
visit our website!**

We have redesigned our website to give our existing and potential customers an insight into our solutions and services offered. Stay tuned to our blog for information on technologies, industry news and our solutions.


For questions and information please contact our sales team.



Click [here](#) and go to our website or point your phone's camera at the QR Code.

 55 31 983520942

 comercial@roboflex.com.br

 55 31 3054-4970

 www.roboflex.com.br



www.roboflex.com.br/en

55 31 3054-4970

55 31 983520942

comercial@roboflex.com.br